

The left side of the slide features a close-up, monochromatic blue-tinted photograph of numerous circular, metallic components, likely battery cells or capacitors, arranged in a grid-like pattern. The components are out of focus, creating a sense of depth and texture.

KULR Technology Group, Inc. Sustainability Solutions

Keith Cochran
President and COO

ARPA-E Workshop: **Circular Economic Materials, Design,
and Manufacturing of Rechargeable Batteries**

June 12-13, 2023, The Drake, Chicago, IL

A hand is shown holding a globe of the Earth. The globe is the central focus, showing continents and oceans. The background is a dark blue gradient with numerous light rays emanating from behind the globe, creating a sense of energy and focus. The overall tone is professional and forward-looking.

Developing Energy Management Platforms to
Accelerate the Global Transition to a
Sustainable Electrification Economy



Michael Mo
Founder & CEO



Keith Cochran
President & COO



William Walker
CTO



Shawn Canter
CFO



Ted Krupp
VP of Sales &
Marketing



Tony Martinez
VP of Operations

- 7 astronauts live aboard ISS
- Cost of space station \$150 billion
- \$3.1 billion NASA spends/year on-going
- 254 miles away from Earth
- 10 years to build
- 30 missions to assemble
- Collaboration of 5 space agencies and 15 countries
- We offer our commercial customers the same technology that we provide to NASA protecting the ISS and its astronauts



- KULR ONE Platform
 - Safe
 - Modular
 - Multiple applications
 - Recyclability
- Battery Life Data
 - Cell Screening
 - FTRC Testing
 - Cell-Check
- Recycling

KULR Solutions Platform Overview

Products	Internal Short Circuit (ISC)	Thermal Runaway Shield (TRS)	SafeX	Fiber Thermal Interface (FTI)	Thermal Capacitor	Screened Cells
	<ul style="list-style-type: none"> ▪ Trigger Cells ▪ Consistent & Reliable 	<ul style="list-style-type: none"> ▪ Thermal Runaway prevention 	<ul style="list-style-type: none"> ▪ Safe & reliable Li-ion storage & transportation 	<ul style="list-style-type: none"> ▪ High thermal conductivity no residue & reworkable 	<ul style="list-style-type: none"> ▪ Cyclically absorbs and provides heat 	<ul style="list-style-type: none"> ▪ High-quality and reliability ▪ N. America sourced supply

Services

Cell Level Testing	Multiphysics Modeling	Battery Design Services	Pack Level Testing	Systems Level Testing	Real Time Monitoring	Transport & Recycling	KULR VIBE
<ul style="list-style-type: none"> ▪ Cell Screening ▪ Thermal runaway characterization 	<ul style="list-style-type: none"> ▪ Analysis of cells, packs and systems 	<ul style="list-style-type: none"> ▪ Safe & reliable battery designs 	<ul style="list-style-type: none"> ▪ Verification of pack safety & reliability 	<ul style="list-style-type: none"> ▪ Advanced, tailored test plans 	<ul style="list-style-type: none"> ▪ CellCheck ▪ Data intensive battery monitoring 	<ul style="list-style-type: none"> ▪ End of life logistics 	<ul style="list-style-type: none"> ▪ Vibration and balance management

KULR ONE Design Services

Other Services

KULR ONE Platform

Developing safe and reliable lithium-ion energy storage for our customers

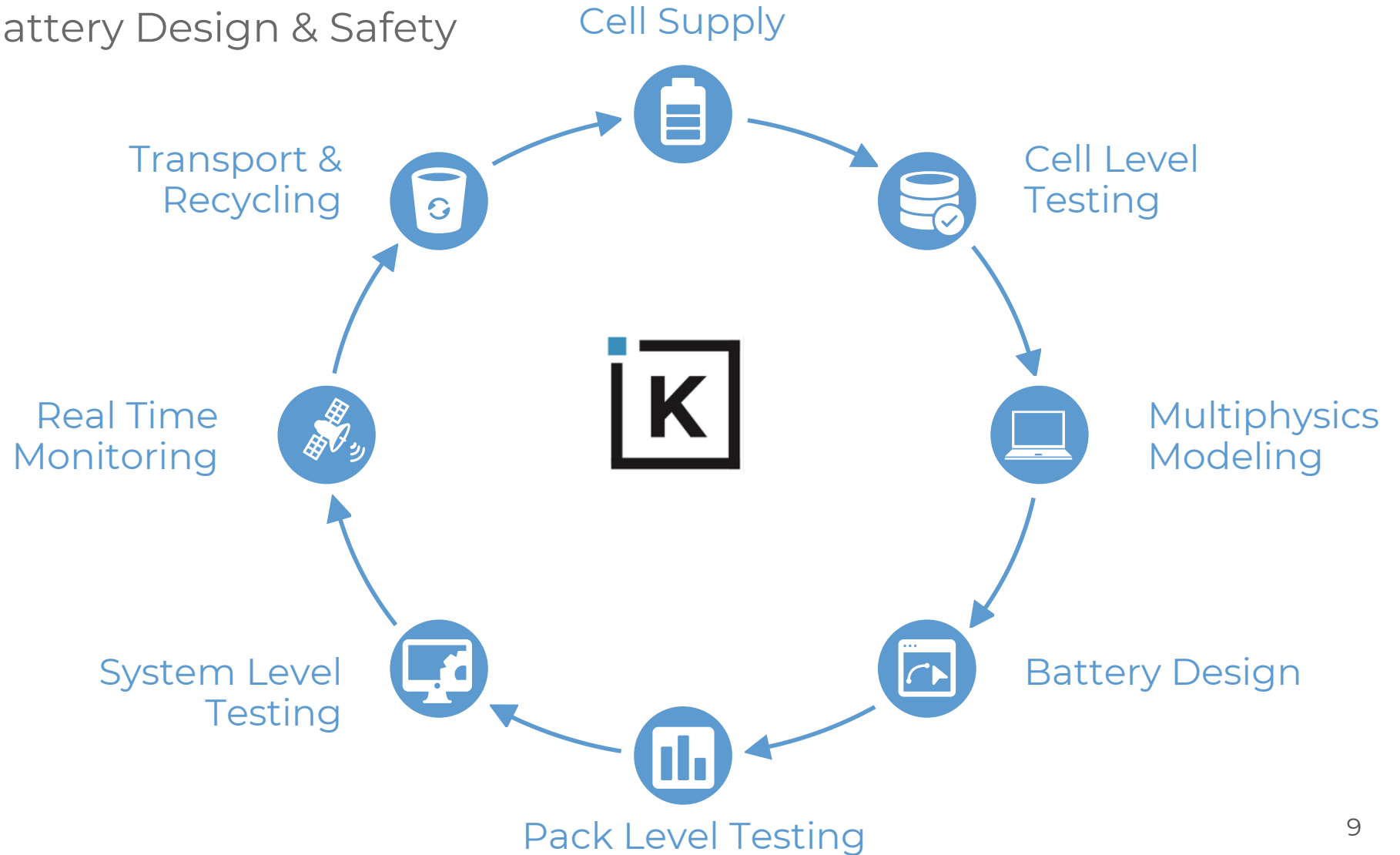
1. Safety
2. Reliability
3. Performance
4. Intelligence
5. Modularity
6. Customization

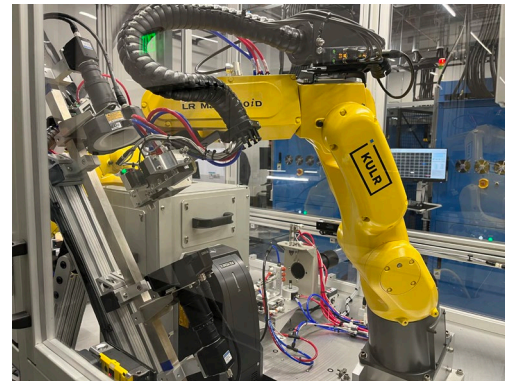


KULR ONE Design Solutions

Holistic Approach to Battery Design & Safety

- 1. **Credible**
- 2. **Agile**
- 3. **Prepared**
- 4. **Responsive**





SafeX Battery Storage Solution

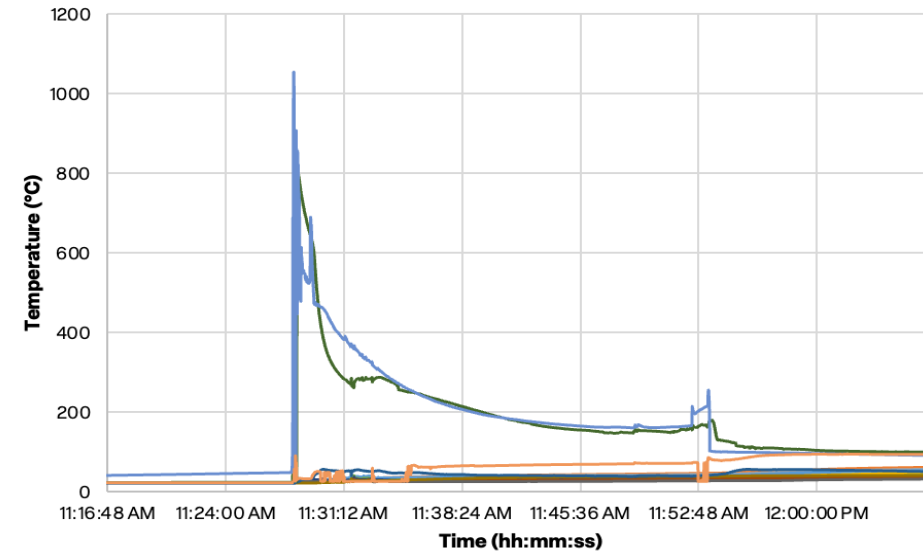
Product Description

- Patented DOT permitted Passive Propagation Resistant (PPR) storage & transportation system for lithium-ion batteries.
- Used by NASA in crewed space vehicles since 2019

Value Proposition

- Mitigates thermal runaway with KULR's patented Thermal Runaway Shield (TRS) technology
- DOT permitted for up to 2.5kWh per case
- No particulates generated during handling
- Light weight, reusable, sustainable and cost effective

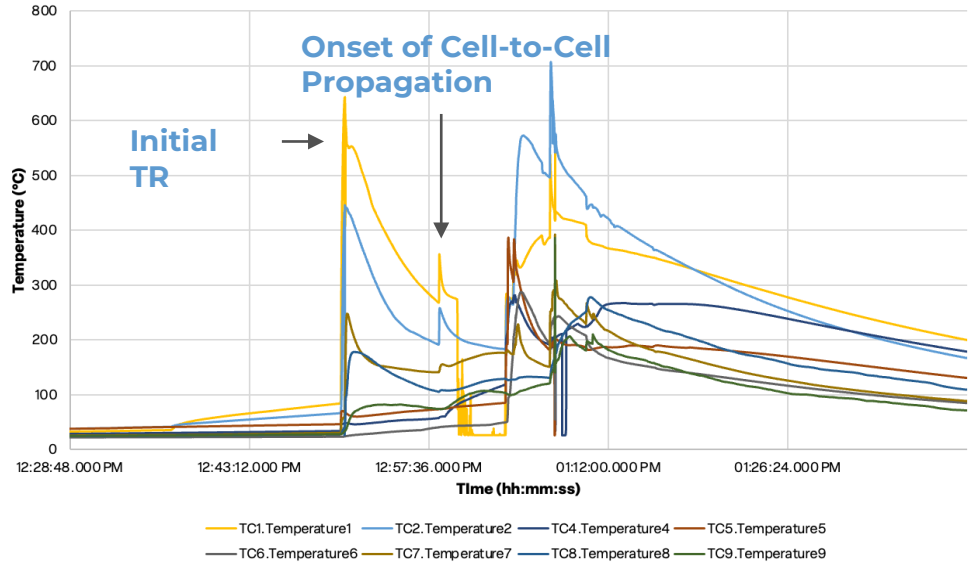




SafeCASE 2.5 kWh Li-ion Battery Contents, 100% SOC



Battery Cells



SafeSLEEVE 300 Wh Li-ion Battery Contents, 100% SOC



www.kulrtechnology.com